

# Keishísh ka Dúk Alder & Cottonwood

**Grade Levels 2-3**

## TEACHER RESOURCES

A series of elementary level thematic units featuring Tlingit language, culture and history were developed in Juneau, Alaska in 2004-6. The project was funded by two grants from the U.S. Department of Education, awarded to the Sealaska Heritage Institute (Boosting Academic Achievement: Tlingit Language Immersion Program, grant #92-0081844) and the Juneau School District (Building on Excellence, grant #S356AD30001).

Lessons and units were written by a team of teachers and specialists led by Nancy Douglas, Elementary Cultural Curriculum Coordinator, Juneau School District. The team included Juneau teachers Kitty Eddy, Shgen George, Kathy Nielson, Hans Chester and Rocky Eddy, and SHI language team members Linda Belarde, Yarrow Vaara, David Katzeek, John Marks, Mary Foletti, Rose Natkong and Jessica Chester. Curriculum consultants Julie Folta and Toni Mallott assisted and Annie Calkins edited the lessons and units.

Lessons were field tested in Juneau classrooms in 2005-6.

All units are available online at [sealaskaheritage.org](http://sealaskaheritage.org).



The contents of this curriculum were developed under the Tlingit Language Immersion Program (2004) and Building on Excellence (2005) grants from the U.S. Department of Education. However, the contents do not necessarily represent the policy of the Dept. of Education and you should not assume endorsement by the Federal Government



## ***Keishísh***

Alder tree





***Dúk***

Cottonwood tree



***X'áax' aasí***

Apple tree





***Aas***

Evergreen tree



***Héen***

Water



## **Kútlk'w**

Soil



# **Gagaan**

Sun





# *As gutú*

## Forest



## ***Aas goowú***

Tree stump



**Séew**

Rain





***yadaak'atsk'ú***

Boy



***X'áax'***

Apple

Daa sá

What does



<p>wé yadaak'atsk'u?</p>		<p>the boy</p>
--------------------------	--	----------------

du tuwáa sigóo

want?

np

He



<p>tuwáa sigóo.</p>		<p>wants</p>
---------------------	--	--------------

xáá, x

an apple.

<p>Aas seiyí</p>		<p>shelter.</p>
------------------	--	-----------------

<p>Aas xeiyí</p>		<p>shade.</p>
------------------	--	---------------

ᑲᑲ, ᑲᑲ  
ᑲᑲ

boards.



<p>x'úx'</p>		<p>paper.</p>
--------------	--	---------------

<p>Ash koolyá't'</p>		<p>to play.</p>
----------------------	--	-----------------

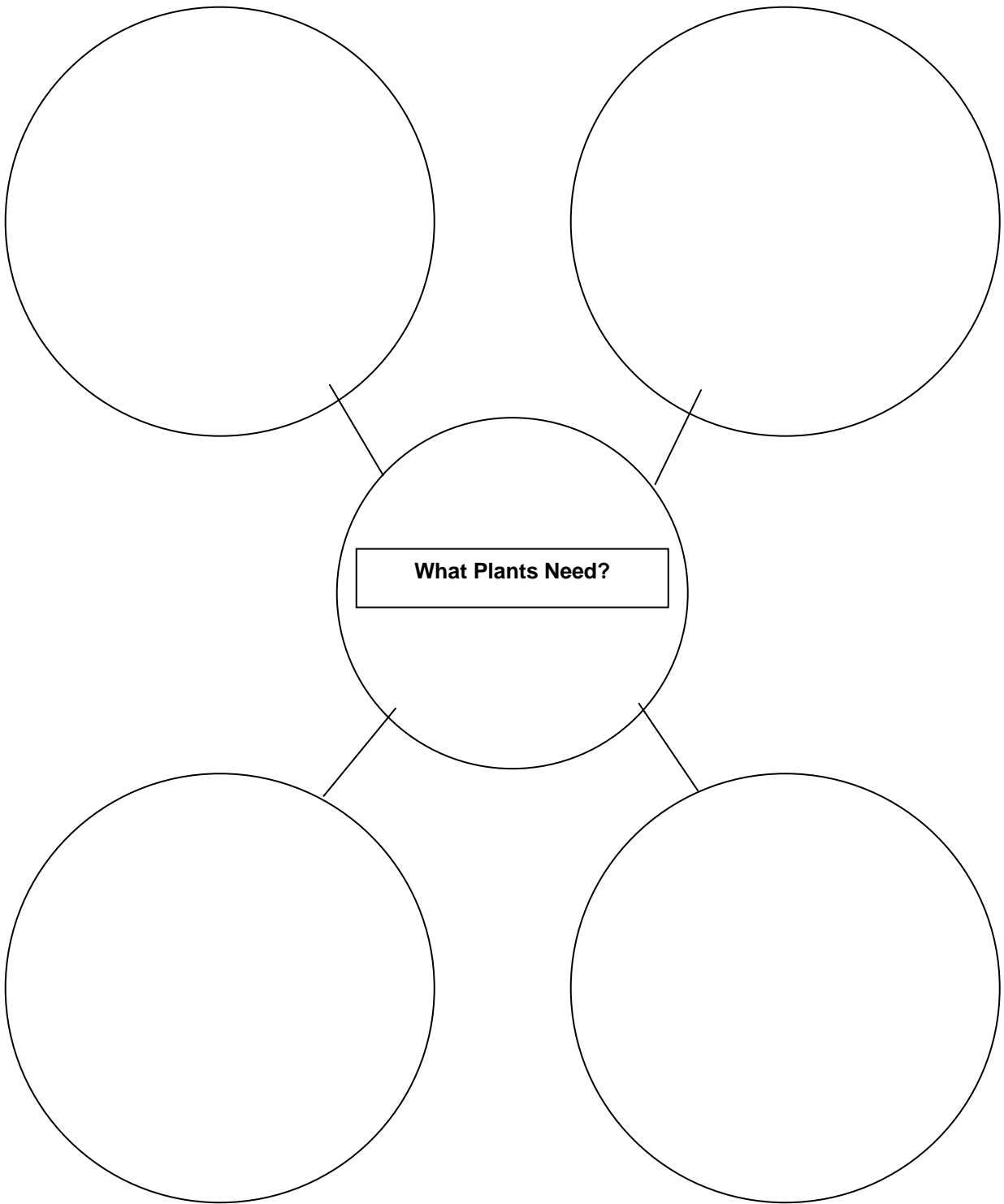
### What a Plant Needs

Draw a tree.

Show something it needs.

<i><u>K</u>út/k'w</i>	soil
<i><u>G</u>agaan</i>	sun
<i>Héen</i>	water
<i>Yées daséik'w</i>	fresh air

### What Trees Need



**Daat**

**What does**



<p>wé x'áax' aasí?</p>		<p>the apple tree</p>
------------------------	--	-----------------------

<p>needs?</p>	<p>eet'éenax̄ sá yatee</p>
---------------	--------------------------------

<p><b>It needs</b></p>	<p><b>et'éenax̄ yatee.</b></p>
------------------------	--------------------------------

<p><b>waqqaan</b></p>		<p><b>sun.</b></p>
-----------------------	--	--------------------

<p><b><u>K</u>útk'w</b></p>		<p><b>soil.</b></p>
-----------------------------	--	---------------------

Híén

water.



Yées daséik'w

fresh air.

Leaves Word Search

Find the hidden words within the grid of letters.

E L M V A A Z I T S Z P U Z M  
A A S U N A H S H X V K O Z U  
Q W J A S H H D Y Z X E E O I  
E J W C B F R C B S L C L E F  
A J U Y O K R G A D E D P X O  
D B A U F T R E H R A J A N G  
T E E J C E T V O T F X M Q T  
H Q Y B E J J O Y G R R S P I  
A T B N N O X E N I F E X Q I  
T L R W M A L D Y W L Y E A D  
N B D Q U L C J D V O D G U H  
A V X E O L R O K R Z O Z T U  
T F B W R R F I L K M K D V U  
T W M F O X U Y A O M K B V Y  
J J U H E F D O U Y R O B G P

alder	elm	maple	tree
color	green	oak	yellow
cottonwood	leaf	sun	

### Leaves Word Search

Find the hidden words within the grid of letters.

E L M V A A Z I T S Z P U Z M  
A A S U N A H S H X V K O Z U  
Q W J A S H H D Y Z X E E O I  
E J W G B F R C B S L C L E F  
A J U Y O K R G A D E D P X O  
D B A U F T R E H R A J A N G  
T E E J C E T V O T F X M Q T  
H Q Y B E J J O Y G R R S P I  
A T B N N O X E N I F E X Q I  
T L R W M A L D Y W L Y E A D  
N B D Q U L G J D V O D G U H  
A V X E O L R O K R Z O Z T U  
T F B W R R F I L K M K D V U  
T W M F O X U Y A Q M K B V Y  
J J U H E F D O U Y R O B G P

alder	elm	maple	tree
color	green	oak	yellow
cottonwood	leaf	sun	

Created with Discovery Channel Schools PuzzleMaker.



## Word Scramble



### Unscramble These Tree Words

rete \_\_\_\_\_

evlaes \_\_\_\_\_

kbra \_\_\_\_\_

troos \_\_\_\_\_

dese \_\_\_\_\_

odwo \_\_\_\_\_





## ***Keishísh tuságu***

Alder trunk



## ***Keishísh looní***

Alder bark





## ***Keishísh t'áni***

Alder branch





## ***Keishísh shakée***

Alder canopy



## ***Keishísh kayaaní***

Alder leaf





## ***Keishísh s'oos'ani***

Alder cones



## ***Keishísh x'aakeidí***

Alder seeds



## ***Dúk tuságu***

Cottonwood trunk



## ***Dúk looní***

Cottonwood bark





## ***Dúk t'áni***

Cottonwood branches





## ***Dúk shakée***

Cottonwood canopy



***Dúk kayaaní***

Cottonwood leaves



## ***Dúk x'aakeidí***

### Cottonwood seeds

The contents of this curriculum were developed under the Tlingit Language Immersion Program (2004) and Building on Excellence (2005) grants from the U.S. Department of Education. However, the contents do not necessarily represent the policy of the Dept. of Education and you should not assume endorsement by the Federal Government





## ***Dúk tu.eetí***

Cottonwood heartwood

What is this called?

Wáa sá duwasáakw  
yáat'aá?

yoo duwasáakw.

That is called

Keishish

alder.



<p><b>Dúk</b></p>		<p><b>cottonwood.</b></p>
-------------------	--	---------------------------

**Xaat**

**a root.**

Aas tusaágu

the trunk.

<p>At looní</p>		<p>bark.</p>
-----------------	--	--------------

<p><b>Kayaaní</b></p>		<p><b>a leaf.</b></p>
-----------------------	--	-----------------------

<p><b>iwá,soo's</b> <b>ni</b></p>		<p><b>a</b> <b>cone.</b></p>
---------------------------------------	--	----------------------------------

<p>Aas tusaágu</p>		<p>the trunk.</p>
--------------------	--	-------------------

<p>At t'áni</p>		<p>branches.</p>
-----------------	--	------------------



<p>Aas shakéé</p>		<p>the canopy.</p>
-------------------	--	--------------------

At x'aakeidi

seeds.

**Daat kuhá sáyá?**

**What season is it?.**

<p>It is</p>		<p>áya.</p>
--------------	--	-------------

<p>yeis</p>		<p>fall.</p>
-------------	--	--------------

<p><b>Táakw</b></p>		<p><b>winter.</b></p>
---------------------	--	-----------------------

<p>Táakw.eeti</p>		<p>spring.</p>
-------------------	--	----------------

<p><b>Kutaan</b></p>		<p><b>summer.</b></p>
----------------------	--	-----------------------



**Draw and Label an Alder or Cottonwood Tree**

*Daat kuhá sáyá?*

What season is it?

\_\_\_\_\_ *áyá.*

It is \_\_\_\_\_.



*Kayaaní - Leaves*  
*A t'áni - Branches*  
*Aas tuságu - Trunk*  
*Xaat - Roots*

**S'agwaat yáx kayaaní yatee yeisx'w.**  
Leaves are brown in the fall.



*Keishísh*



*Dúk*



***Hóoch'i kayaaní táakwx'w.***  
Leaves are gone in the winter.



*Keishísh*



*Dúk*

***Kayaaní at sháadi yáx táakw.eetíx'w kuwoohaayee.***  
Leaves sprout in the spring.



*Keishísh*



*Dúk*



**S'oow yáx kayaan'i yatee kutaanx'.**  
Leaves are green in the summer.



*Keishísh*



*Dúk*

## Leaf Comparison

Pick two leaves. Draw and write your answers in the form below.

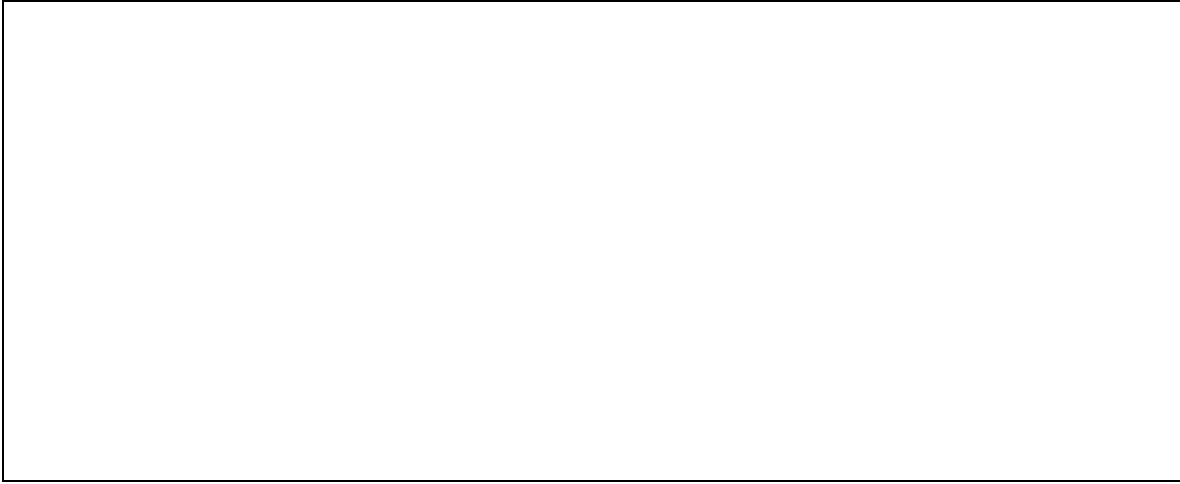
Draw a picture of a leaf.	Draw a picture of a leaf.
How are they alike?	How are they different?

### My First Leaf/My Second Leaf

My First Leaf

Measure the length (from top to bottom) and width (how long from one side to the other) of your first leaf.

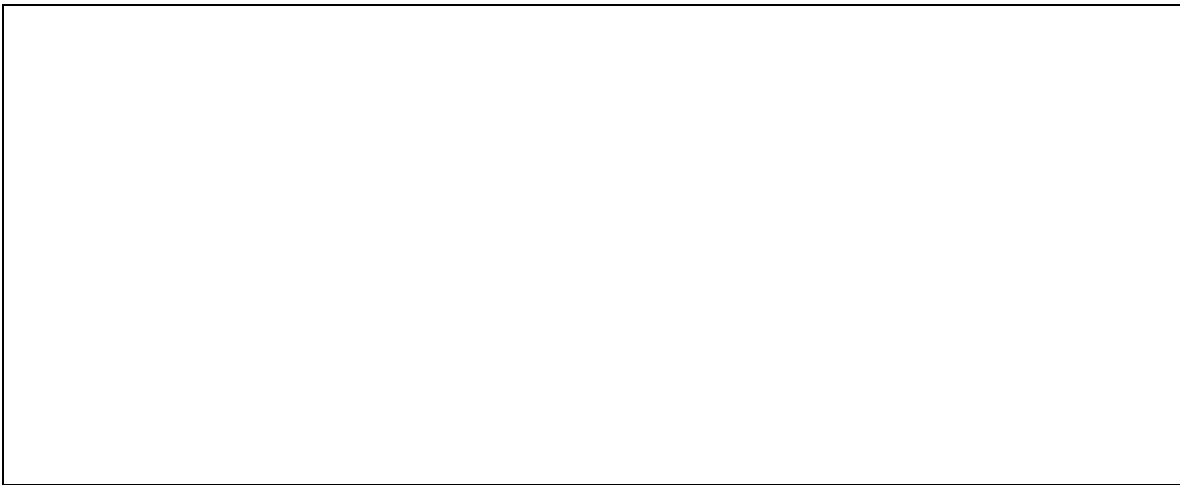
My leaf is \_\_\_\_\_ centimeters long. My leaf is \_\_\_\_\_ centimeters wide. Draw or trace and color a picture of your leaf in the space below.



My Leaf

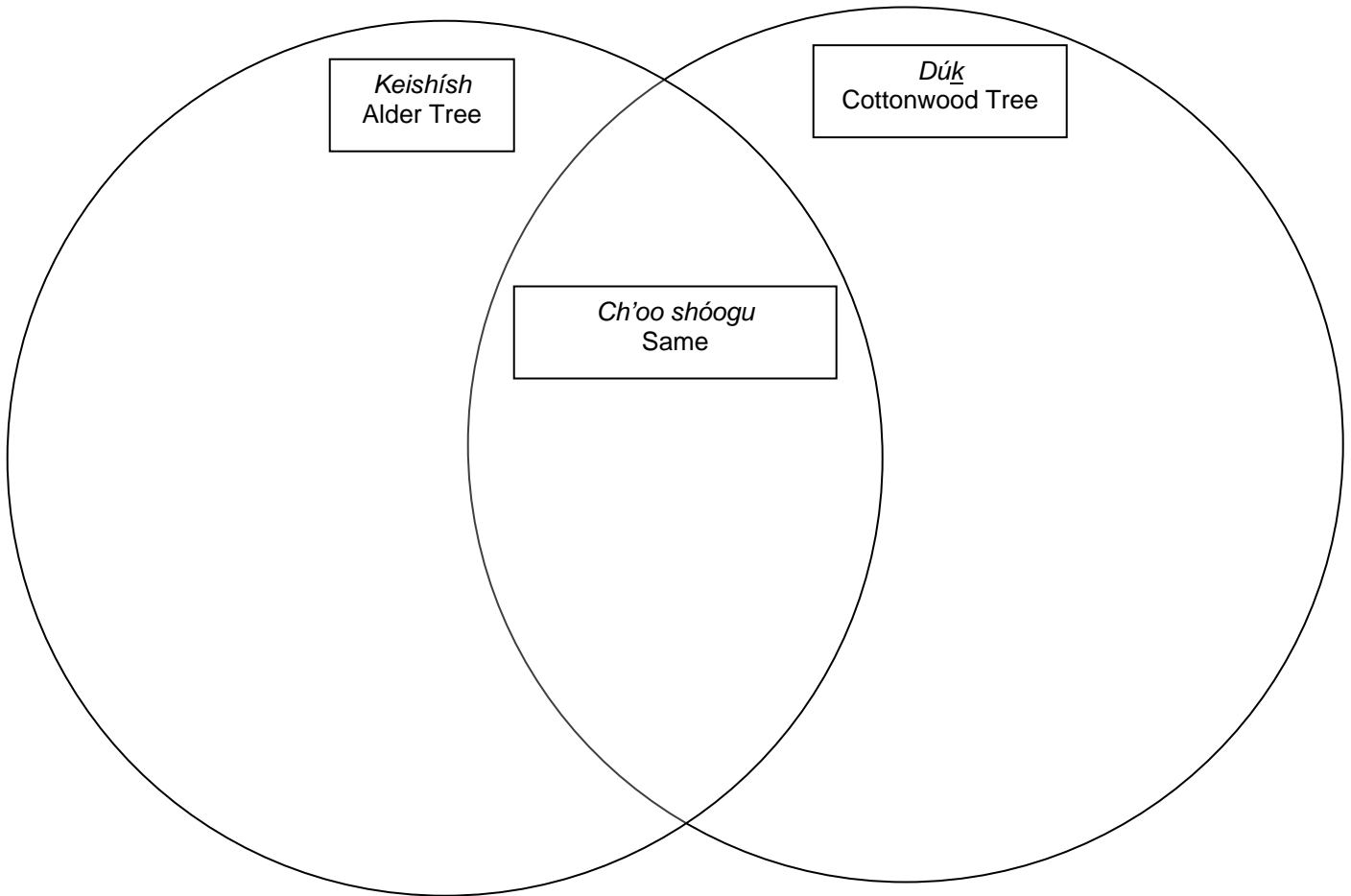
Measure the length (from top to bottom) and width (how long from one side to the other) of your first leaf.

My leaf is \_\_\_\_\_ centimeters long. My leaf is \_\_\_\_\_ centimeters wide. Draw or trace and color a picture of your leaf in the space below.





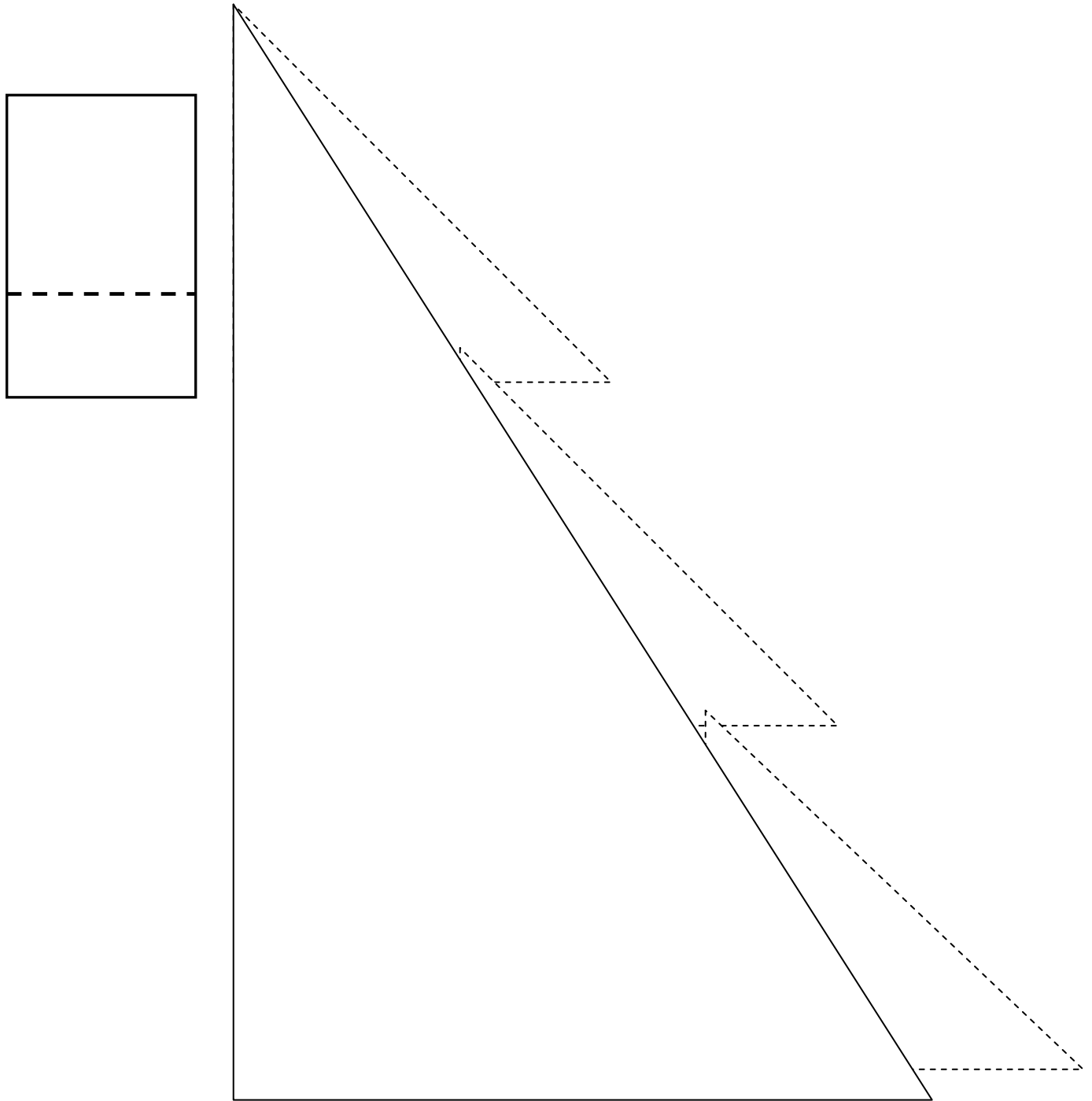
Tree Comparison  
**Venn Diagram**



Rubric  
 Alder/Cottonwood Leaf Identification

<b>Objectives</b>	<b>Needs Improvement</b>	<b>Satisfactory</b>	<b>Outstanding</b>	<b>Point Earned</b>
Student was able to find and identify alder and cottonwood leaves.	<b>1 point</b> Found and identified one leaf.	<b>2 points</b> Found and identified two leaves.	<b>3 points</b> Found and identifies three or more leaves.	
Student can explain how the shape, size, and color of the leaf tells what tree leaf is from.	<b>0 points</b> Cannot tell what tree a leaf is from.	<b>2 points</b> Can identify the tree of one leaf.	<b>4 points</b> Can tell two or more leaves and the trees they are from.	
Student can use words to describe the leaves.	<b>1 point</b> Can use at least one word to describe a leaf.	<b>3 points</b> Can use two or three words to describe a leaf.	<b>5 points</b> Can use four or more words to describe a leaf.	
			<b>Score:</b>	

## Evergreen Tree Pattern

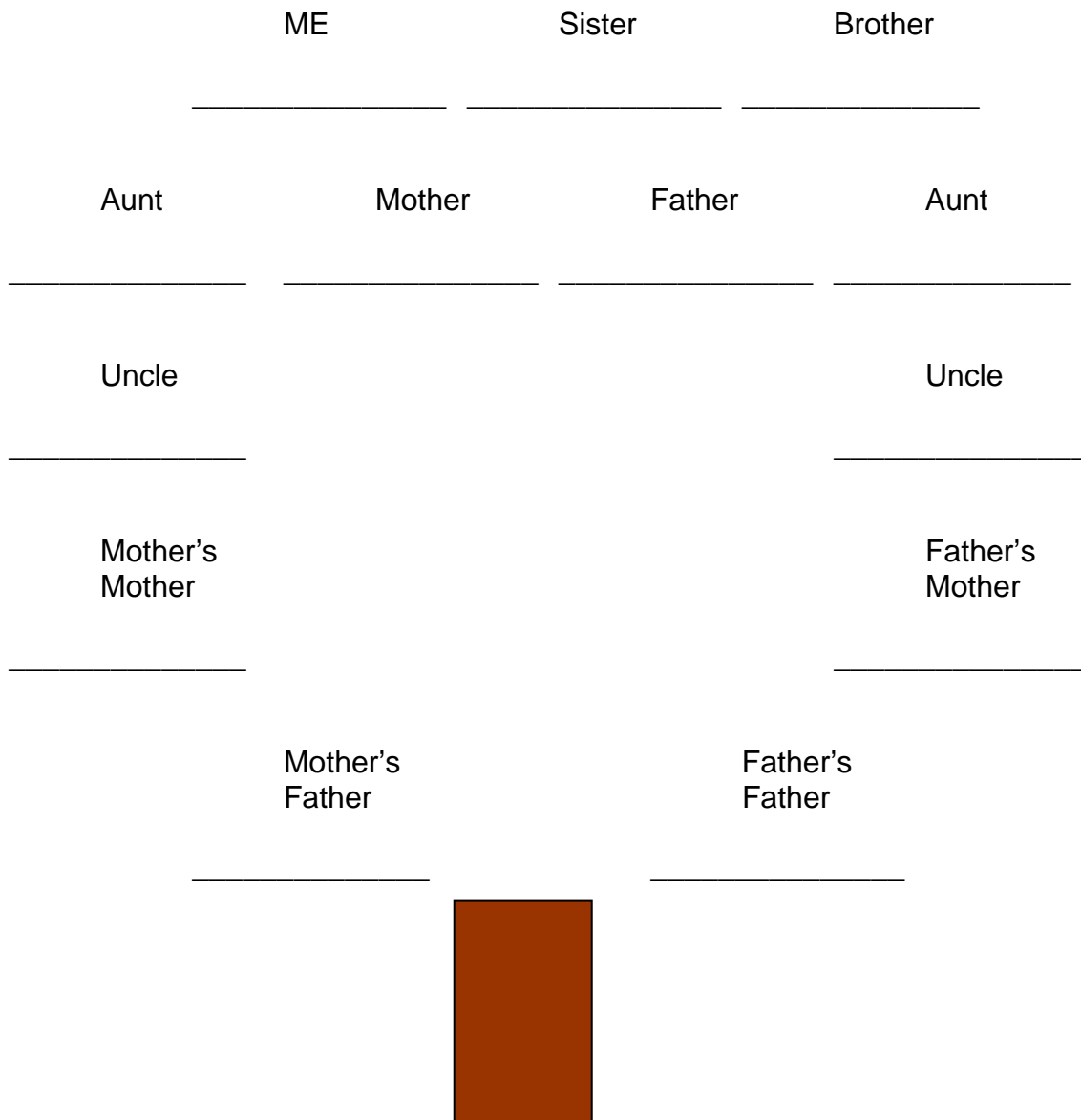


## Your Family Tree

A family tree tells about the people who live in your family. It also tells about relatives who lived long ago. These people are called your ancestors. Write in the names of the people on your own family tree.

We have \_\_\_\_\_ relative. Relatives make up a family.

Make a family tree with each member's name on a branch



Name \_\_\_\_\_ Date \_\_\_\_\_

**What do Roots and Stems Do?**

How much water is in the cup?	
Day 1	cm
Day 2	cm
Day 3	cm
Day 4	cm
Day 5	cm

**What happened to the water?**

1. \_\_\_\_\_  
\_\_\_\_\_  
\_\_\_\_\_
2. \_\_\_\_\_  
\_\_\_\_\_  
\_\_\_\_\_
3. \_\_\_\_\_  
\_\_\_\_\_  
\_\_\_\_\_

### Bingo Card

<b><i>A t'áni</i></b> Branches	<b><i>Aas tuságu</i></b> Trunk	<b><u>X</u>aat</b> Root
<b><i>Kayaaní</i></b> Leaves	Free Space	<b><i>At looní</i></b> Bark
<b><u>K</u>útlk'w</b> Soil	<b><i>Héen</i></b> Water	<b><u>G</u>agaan</b> Sun light

## Bingo Card

<b><i>Kayaaní</i></b> Leaves	<b><i>A t'áni</i></b> Branches	<b><u>X</u>aat</b> Root
<b><i>At looní</i></b> Bark	Free Space	<b><i>Aas tuságu</i></b> Trunk
<b><u>K</u>útlk'w</b> Soil	<b><i>Héen</i></b> Water	<b><u>G</u>agaan</b> Sun light



## Bingo Card

<b><i>Aas tuságu</i></b> Trunk	<b><i>A t'áni</i></b> Branches	<b><u>X</u>aat</b> Root
<b><i>At looní</i></b> Bark	Free Space	<b><u>G</u>agaan</b> Sun light
<b><u>K</u>útlk'w</b> Soil	<b><i>Kayaaní</i></b> Leaves	<b><i>Héen</i></b> Water

## Bingo Card

<b><i>Héen</i></b> Water	<b><i>A t'áni</i></b> Branches	<b><u>Kútlk'</u>w</b> Soil
<b><i>At looní</i></b> Bark	Free Space	<b><u>Gagaan</u></b> Sun light
<b><i>Kayaaní</i></b> Leaves	<b><i>Aas tuságu</i></b> Trunk	<b><u>Xaat</u></b> Root

## Bingo Card

<b><i>Héen</i></b> Water	<b><i>Kayaaní</i></b> Leaves	<b><i><u>Kútlk'</u>w</i></b> Soil
<b><i>A t'áni</i></b> Branches	Free Space	<b><i><u>Gagaan</u></i></b> Sun light
<b><i><u>Xaat</u></i></b> Root	<b><i>At looní</i></b> Bark	<b><i>Aas tuságu</i></b> Trunk

## Bingo Card

<b><i>Aas tuságu</i></b> Trunk	<b><i>Kayaaní</i></b> Leaves	<b><u>G</u>agaan</b> Sun light
<b><i>A t'áni</i></b> Branches	Free Space	<b><i>Héen</i></b> Water
<b><u>K</u>útlk'w</b> Soil	<b><i>At looní</i></b> Bark	<b><u>X</u>aat</b> Root

## Bingo Card

<b><i>Kayaaní</i></b> Leaves	<b><i>A t'áni</i></b> Branches	<b><i>Aas tuságu</i></b> Trunk
<b><i><u>K</u>útlk'w</i></b> Soil	Free Space	<b><i>At looní</i></b> Bark
<b><i>Héen</i></b> Water	<b><i><u>G</u>agaan</i></b> Sun light	<b><i><u>X</u>aat</i></b> Root

## Bingo Card

<b><i>Kayaaní</i></b> Leaves	<b><u>G</u>agaan</b> Sun light	<b><i>Aas tuságu</i></b> Trunk
<b><i>A t'áni</i></b> Branches	Free Space	<b><u>K</u>útlk'w</b> Soil
<b><i>At looní</i></b> Bark	<b><i>Héen</i></b> Water	<b><u>X</u>aat</b> Root

## Bingo Card

<b><u>X</u>aat</b> Root	<b>Aas tuságu</b> Trunk	<b>Héen</b> Water
<b>A t'áni</b> Branches	Free Space	<b>Kayaaní</b> Leaves
<b>At looní</b> Bark	<b><u>K</u>útlk'w</b> Soil	<b><u>G</u>agaan</b> Sun light



**Plant life cycle**  
*Ka.éix at kusteeyí*

*I sáayí*  
Your name \_\_\_\_\_

*Yaa yagiyee*  
Date \_\_\_\_\_

Predict when the seeds will germinate \_\_\_\_\_

Predict what the adult plant will look like.  
Compare them when the plants have grown.

*Wé ka.éix at kayshaxit.*

Draw the plant.



*Waa sákw ligéi wé ka.éix at?*  
*Waa sákw ligéi wé kayaaní?*  
*Daa sákw liséikw wé k'eikaxwéin?*

How tall is the plant?  
What size is the leaf?  
What color is the flower?

**Germinating seeds**

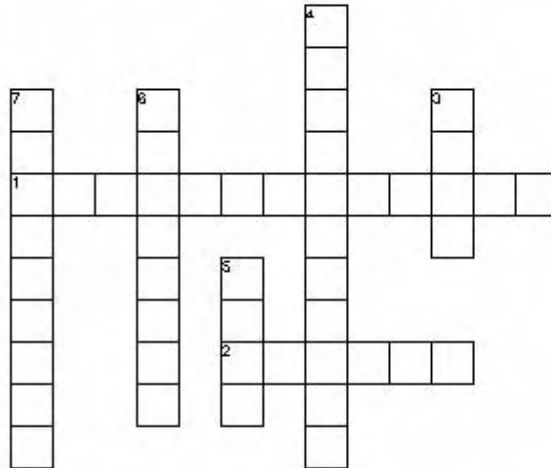
Record your observations as the seed sprouts.  
What do you see? What does each plant part do?

<b>Three Part of Plants</b>		
<b><i>Xaat</i></b> Root	<b><i>A kadíx'i</i></b> Stem	<b><i>Kayaaní</i></b> Leaf

Name \_\_\_\_\_ Date \_\_\_\_\_

Plant Crossword Puzzle

Complete the puzzle using the clues shown below.



**Across**

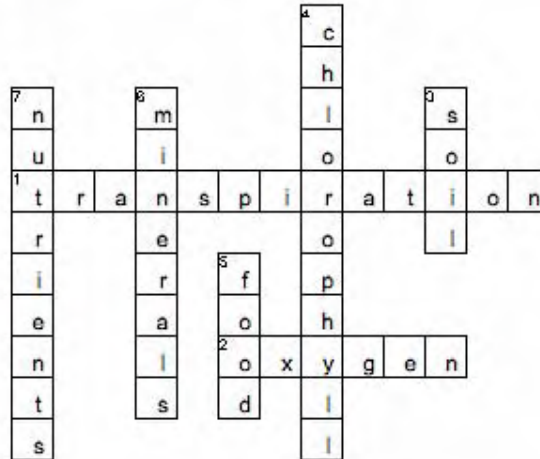
1. the evaporation of water into the air
2. a gas without color, taste, or odor

**Down**

3. ground, earth, or dirt
4. the green color in most plants
5. nourishment that helps plants live and grow
6. substances of the earth neither plant nor animal
7. substances that provide food and nourishment

Plant Crossword Puzzle

Complete the puzzle using the clues shown below.



**Across**

1. the evaporation of water into the air
2. a gass without color, taste, or odor

**Down**

3. ground, earth, or dirt
4. the green color in most plants
5. nourishment that helps plants live and grow
6. substances of the earth neither plant nor animal
7. substances that provide food and nourishment

Created with Discovery Channel Schools PuzzleMaker.



## *Keishish ka Dúk* - Alder and Cottonwood Unit Tlingit Components

### Lesson 1

#### Vocabulary

1. tree	<i>aas</i>
2. alder tree	<i>keishísh</i>
3. the spirit of the tree people	<i>aas kwáani</i>
4. respect	<i>at yaa awunéi</i>
5. soil	<i>kútlk'w</i>
6. sun	<i>gagaan</i>
7. water	<i>héen</i>
8. fresh air	<i>yées daséik'w</i>
9. boy	<i>yadaak'atsk'u</i>
10. apple	<i>x'áax'</i>
11. apple tree	<i>x'áax' aasí</i>
12. shelter of a tree	<i>aas seiyí</i>
13. shade/shadow of tree	<i>aas xeiyi</i>
14. board	<i>t'áa</i>
15. paper	<i>x'úx'</i>
16. tree stump	<i>aas goowú</i>

#### Phrases

17. Y'all point to the (tree). [plural]	<i>(Aas)t yich'ix'.</i>
18. Y'all point to the (apple).	<i>(X'áax')t yich'ix'.</i>
19. Y'all point to the (sun).	<i>(Gagaan)t yich'ix'.</i>
20. Y'all point to the boy.	<i>(Yadaak'atsk'u)t yich'ix'.</i>
21. Y'all touch the (tree). [plural]	<i>(Aas)t yishi.</i>
22. Y'all touch the (apple).	<i>(X'áax')t yishi.</i>
23. Y'all touch the (picture of a sun).	<i>(Gagaan yahaayi)t yishi.</i>
24. Y'all touch the (boy).	<i>(Yadaak'atsk'u)t yishi.</i>
25. Touch the (tree). [singular]	<i>(Aas)t shi.</i>
26. Point to the (tree). [singular]	<i>(Aas)t ch'ix'.</i>
27. What is this?	<i>Q: Daa sáyá?</i>
28. That is (a tree).	<i>A: (Aas) áwé.</i>
29. What does (the boy) want? <i>(yadaak'atsk'u)?</i>	<i>Daa sá du tuwáa sigóo wé</i>
30. He wants (an apple).	<i>(X'áax') du tuwáa sigóo.</i>
31. He wants (shelter).	<i>(Deili) du tuwáa sigóo</i>
32. He wants (shade)	<i>(Aas xeiyi) du tuwáa sigóo.</i>
33. He wants (paper).	<i>(X'úx') du tuwáa sigóo</i>
34. He wants (boards).	<i>(T'áa) du tuwáa sigóo</i>
35. What does the (tree) need?	<i>Daat eetéenax sá yatee wé (aas)?</i>
36. It needs (water).	<i>(Héen) eetéenax yatee.</i>
37. It needs (soil).	<i>(Kúlk'w) eetéenax yatee.</i>
38. It needs (sun).	<i>(Gagaan) eetéenax yatee.</i>
39. It needs (air).	<i>(Yées daséikw) eetéenax yatee.</i>

## Lesson 2

### Vocabulary

40. root	<i>xaat</i>
41. trunk	<i>aas tuságu</i>
42. bark	<i>at looní</i>
43. branches	<i>at t'áni</i>
44. tree crown (top)	<i>aas shakée</i>
45. leaf	<i>kayaaní</i>
46. cambium	<i>sáx'</i>
47. cone	<i>s'óos'ani</i>
48. its seeds	<i>at x'aakeidí</i>
49. its sprouts	<i>at shaadí</i>
50. heartwood	<i>a tu.eetí</i>
51. heart	<i>téix'</i>
52. circle	<i>koojúxaa yáx</i>

### Phrases

53. What is this called in Lingít? <i>x'éináx?</i>	<i>Wáa sá duwasáakw yáat'aa Lingít</i>
54. It is called (a cone).	<i>(S'óos'ani) yoo duwasáakw.</i>
55. It is called (a leaf).	<i>(Kayaaní) yoo duwasáakw.</i>
56. It is called (a root).	<i>(Xaat) yoo duwasáakw.</i>
57. It is called (the trunk).	<i>(Aas tuságu) yoo duwasáakw.</i>
58. It is called (bark).	<i>(At looní) yoo duwasáakw.</i>
59. It is called (branches).	<i>(At t'áni) yoo duwasáakw.</i>
60. We will walk in the forest.	<i>As gutúdei gaxtoo.aat</i>
61. We will look at alder and cottonwood trees. <i>agaxtoolgein.</i>	<i>Keishísh ka dúk aadei</i>
62. Let's walk over there.	<i>Aadei naxtoo.aat.</i>
63. Walk over there. [plural]	<i>Aadei nay.á.</i>
64. Walk over there. [singular]	<i>Aadei nagú.</i>
65. Stop.	<i>Tliyéix'.</i>
66. Look at (the leaf).	<i>(Kayaaní)t eelgéin.</i>
67. Look over there.	<i>Yoot eelgein.</i>
68. Look at the trees.	<i>(Aas)t eelgein.</i>
69. Draw bark.	<i>(At looní) yahaahí kayshaxít.</i>
70. Color the bark brown.	<i>S'agwaat yáx kaylas'éik'w wé (at looní).</i>
71. Draw cambium.	<i>(Sáx') yahaahí kayshaxít.</i>
72. Color a green circle. <i>yahaayí.</i>	<i>S'oow yáx kaylas'éik'w wé (koojúxaa)</i>
73. Draw heartwood	<i>(A tu.eetí) yahaahí kayshaxít.</i>
74. Color a red heart	<i>X'aan yáx kaylas'éik'w wé (teix').</i>
75. How old are you?	<i>X'oon táakw sáwé i katáagu?</i>
76. I am (five) years old.	<i>(Keijín) táakw ax katáagu.</i>
77. Draw (five) rings.	<i>(Keijín) koojúxaa yahaayí kayshaxít.</i>

### Lesson 3

#### Vocabulary

78. fall	<i>yeis</i>
79. winter	<i>táakw</i>
80. spring	<i>taakw.eetí</i>
81. summer	<i>kutaan</i>
82. season	<i>yax kuhá</i>
83. beach or mountain alder	<i>keishísh</i>
84. cottonwood	<i>dúk</i>
85. leaves	<i>kayaaní</i>
86. branch	<i>a t'áni</i>
87. shoots	<i>a shaadí</i>
88. green	<i>s'óow</i>
89. brown	<i>s'agwáat</i>
90. gone	<i>hóoch'</i>

#### Phrases

91. What season is it?	<i>Daat kuhá sáyá?</i>
92. It's (fall).	<i>(Yéis) áyá.</i>
93. It's (winter).	<i>(Táakw) áyá.</i>
94. It's (spring).	<i>(Taakw.eetí) áyá.</i>
95. It's (summer).	<i>(Kutaan) áyá.</i>
96. Draw a (tree)	<i>(Aas) yahaayí kayshaxít.</i>
97. We will go on a walk today.	<i>Aadei gaxtoo.aat yaa yagiyee.</i>
98. Let's look at (leaves).	<i>(Kayaaní) at aaxtoolgein.</i>
99. It's (fall) now.	<i>(Yeis)t áyá koowaháa.</i>
100. Leaves are brown in the fall.	<i>S'agwaat yax kayaaní yatee yeisx'w.</i>
101. Look at the (leaves).	<i>(Kayaaní)t eelgein.</i>
102. Draw (a tree).	<i>(Aas) yaháayi kayshaxít.</i>
103. Let's look at (branches).	<i>(A t'áni) at aaxtoolgein.</i>
104. It's (winter) now.	<i>(Táakw)t áyá koowaháa.</i>
105. Leaves are gone in the winter.	<i>Hóoch' kayaaní táakwx'w.</i>
106. Look at the (branches).	<i>(A t'áni)t eelgein.</i>
107. Draw (branches).	<i>(A t'áni) yaháayi kayshaxít.</i>
108. Let's look at (shoots).	<i>(A sháadi) at aaxtoolgein.</i>
109. It's (spring) now.	<i>(Taakw.eetí)t áyá koowaháa.</i>
110. The leaves are shoots in the spring.	<i>Kayaaní at sháadí yax yatee</i> <i>taakw.eetíx'w.</i>
111. Look at the (shoots).	<i>(At shaadí)t eelgein.</i>
112. Draw (shoots).	<i>(At shaadí) yahaayí kayshaxít.</i>

### Lesson 4

#### Vocabulary

113. alder leaf	<i>keishísh kayaaní</i>
114. cottonwood leaf	<i>dúk kayaaní</i>
115. brown	<i>s'agwáat</i>
116. gold	<i>goon</i>

117. green	<i>s'oo</i> w
118. orange	<i>shéix'</i> w
119. red	<i>x'aan</i>
120. yellow	<i>tl'áat'</i>
121. jagged	<i>kasix'áxw</i>
122. not jagged (straight)	<i>tlél koosx'áxw</i>
123. narrow	<i>yeik lisaa</i>
124. wide	<i>yei kuwúx'</i>
125. leaf veins	<i>kayaaní téet'i</i>

#### Phrases

126. Look at the (leaves).	<i>(Kayaaní)t eelgéin.</i>
127. Pick up two leaves.	<i>Aax yeik sanéi déix kayaaní.</i>
128. Carry the leaves to the school.	<i>Sgóondei yeik sanéi wé kayaaní.</i>
129. What color is the leaf?	<i>Waa sákw liséik'w wé kayaaní?</i>
130. The leaf is (green).	<i>(S'oo) yáx yatee wé kayaaní.</i>
131. The leaf is (brown).	<i>(S'agwáat) yáx yatee wé kayaaní.</i>
132. The leaf is (gold).	<i>(Goon) yáx yatee wé kayaaní.</i>
133. The leaf is (orange).	<i>(Shéix'w) yáx yatee wé kayaaní.</i>
134. The leaf is (red).	<i>(X'aan) yáx yatee wé kayaaní.</i>
135. The leaf is (yellow).	<i>(Tl'áat') yáx yatee wé kayaaní.</i>
136. Trace the leaf.	<i>Kayaaní daa kayshaxít.</i>
137. Measure the leaf	<i>Nakaa wé kayaaní.</i>
138. What size is the leaf?	<i>Waa sákw kugéi wé kayaaní?</i>
139. A big leaf.	<i>Kayaaní tléin.</i>
140. A small leaf.	<i>Kayaaní k'atsk'u</i>
141. The leaf has smooth/straight edges.	<i>Tlél koosx'áxw kayaaní wání.</i>
142. The leaf has jagged edges.	<i>Kasix'áxw kayaaní wání.</i>
143. The leaf is wide.	<i>Yawúx'u aa kayaaní.</i>
144. The leaf is narrow.	<i>Yeik lisaa wé kayaaní.</i>
145. Are they the same?	<i>Ch'oo shóogu yáx gé has yatee?</i>

#### Lesson 5

##### Vocabulary

146. forest	<i>as gutú</i>
147. alder	<i>keishísh</i>
148. cottonwood	<i>dúk</i>
149. tree pattern	<i>aas kaayí</i>
150. tree trunk	<i>aas tuságu</i>
151. tree crown	<i>aas shakée</i>
152. (my) older brother [boy]	<i>(ax) húnxw</i>
153. (my) sister [boy]	<i>(ax) dlaak'</i>
154. (my) younger brother [boy]	<i>(ax) kéek'</i>
155. (my) older sister [girl]	<i>(ax) shátx</i>
156. (my) brother [girl]	<i>(ax) éek'</i>
157. (my) younger sister [girl]	<i>(ax) kéek'</i>
158. (my) grandparent	<i>(ax) léelk'w</i>



159. (my) father	<i>(ax) éesh</i>
160. (my) mother	<i>(ax) tláa</i>
161.root	<i>xaat</i>
162. water	<i>héen</i>

#### Phrases

163. Draw an (alder).	<i>(Keishish) yahaayí kayshaxít.</i>
164. Draw a (cottonwood).	<i>(Dúk) yahaayí kayshaxít.</i>
165. Color the (alder).	<i>(Keishish) kaylas'éik'w.</i>
166. Color the (cottonwood).	<i>(Dúk) kaylas'éik'w.</i>
167. Cut out the (alder).	<i>Kei xaash wé (Keishish).</i>
168. Cut out the (cottonwood).	<i>Kei xaash wé (Dúk).</i>
169. Glue the (alder) on the paper.	<i>X'úx' kax' kalas'ix'w wé (keishish).</i>
170. Glue the (cottonwood) on the paper.	<i>X'úx' kax' kalas'ix'w wé (dúk).</i>
171.How deep is the water?	<i>Waa sákw gwadlaan wé héen?</i>
172. (#five) centimeters deep.	<i>(#keijín) centimeters gwadlaan.</i>

### Lesson 6

#### Vocabulary

173. alder bark	<i>keishísh looní</i>
174. cottonwood bark	<i>dúk looní</i>
175. rubbing/image of the bark	<i>at looní yahaayí</i>
176. box	<i>kóok</i>
177. soil	<i>kútlk'w</i>
178. water	<i>héen</i>
179. sun	<i>gagaan</i>

#### Phrases

180. Walk with me.	<i>Ax een nay.aa</i>
181.Give me your hand.	<i>Haandéi i jín.</i>
182. Be careful.	<i>Jín kwat sheeltín.</i>
183. Stop!	<i>Tliyéix'!</i>
184. Color the (bark).	<i>(At looní) yahaayí kaylas'éik'w.</i>
185. Put your hand in the box.	<i>Koox toot i jín.</i>
186. What do you feel?	<i>Daa sá jee idinook?</i>
187. I feel (alder bark).	<i>(Keishísh looní) jee xdinook.</i>
188. I feel (cottonwood bark).	<i>(Dúk looní) jee xdinook.</i>
189. I feel (alder leaves).	<i>(Keishísh kayaaní) jee xdinook.</i>
190. I feel (cottonwood leaves).	<i>(Dúk kayaaní) jee xdinook.</i>
191.Raise your hand if you win!	<i>Kindéi i jín i yawadlaak!</i>
192. I win!	<i>Yaa xwadlaak'!</i>

### Lesson 7

#### Vocabulary

193. pebbles	<i>l'éiw</i>
194. soil	<i>kútl'kw</i>
195. root	<i>xaat</i>
196. seed	<i>at x'aakeidí</i>

- 197. embryo
- 198. sprouts
- 199. leaf bud

*a tuyadi*  
*at shaadí*  
*a kayaaní ooxú*

Phrases

- 200. Put (gravel) in the pot.
- 201. Put the (soil) in the pot.
- 202. Plant the seeds.
- 203. Keep the soil moist.
- 204. Draw the (plant).
- 205. The (tree) is growing.
- 206. The (sprouts) are growing.
- 207. The (embryo) is growing.
- 208. The (root) is growing.
- 209. The (stem) is growing.
- 210. The (leaf) is growing.
- 211. Look at the (branch).
- 212. Look at the (leaf bud).
- 213. Draw the (leaf bud).

*K'wátlx' kaa yei na.oo wé (l'éiw).*  
*K'wátlx' kaa yei na.oo wé (kutlk'w).*  
*Kanaháa wé at x'aakeidí.*  
*Ch'a tlaakw kanaltl'ák'x wé kútlk'w.*  
*Wé (kayaaní) kayshaxít.*  
*(Aas) kei kana.éin.*  
*(A shaadí) kei kana.éin.*  
*(A tuyadi) kei kana.éin.*  
*(Xaat) kei kana.éin.*  
*(At kadix'i) kei kana.éin.*  
*(Kayaaní) kei kana.éin.*  
*(A t'áni)t eelgein.*  
*(Kayaaní ooxú)t eelgein.*  
*(Kayaaní ooxú) yahaayí kayshaxít.*